

# B1, Montane Grasshopper Collection (2591m or 8500ft)

- **2006**
- *Aeropedellus clavatus*- 30 images/page. Print 1 sheet.
- *Chloealtis abdominalis*- 6 images/page. Print 1 sheet.
- *Camnula pellucida* – 12 images/page. Print 1 sheets.
- *Circotettix rabula*- 16 images/page. Print 1 sheet.
- *Xanthippus corallipes* -16 images/page. Print 1 sheet.
- *Melanoplus dawsoni*- 28 images/page. Print 1 sheet. Need cercus, print page 9 behind page 8.
- *Melanoplus dodgei*- 16 images/page. Print 2 sheets. Need cercus, print page 11 behind page 10.
- *Melanoplus packardii*- 16 images/page. Print 3 sheets. Need cercus, print page 13 behind page 12.

Grasshopper Photos by Gerald M. Fauske

[http://www.ndsu.nodak.edu/ndmoths/hopper/orthoptera\\_index.htm](http://www.ndsu.nodak.edu/ndmoths/hopper/orthoptera_index.htm)

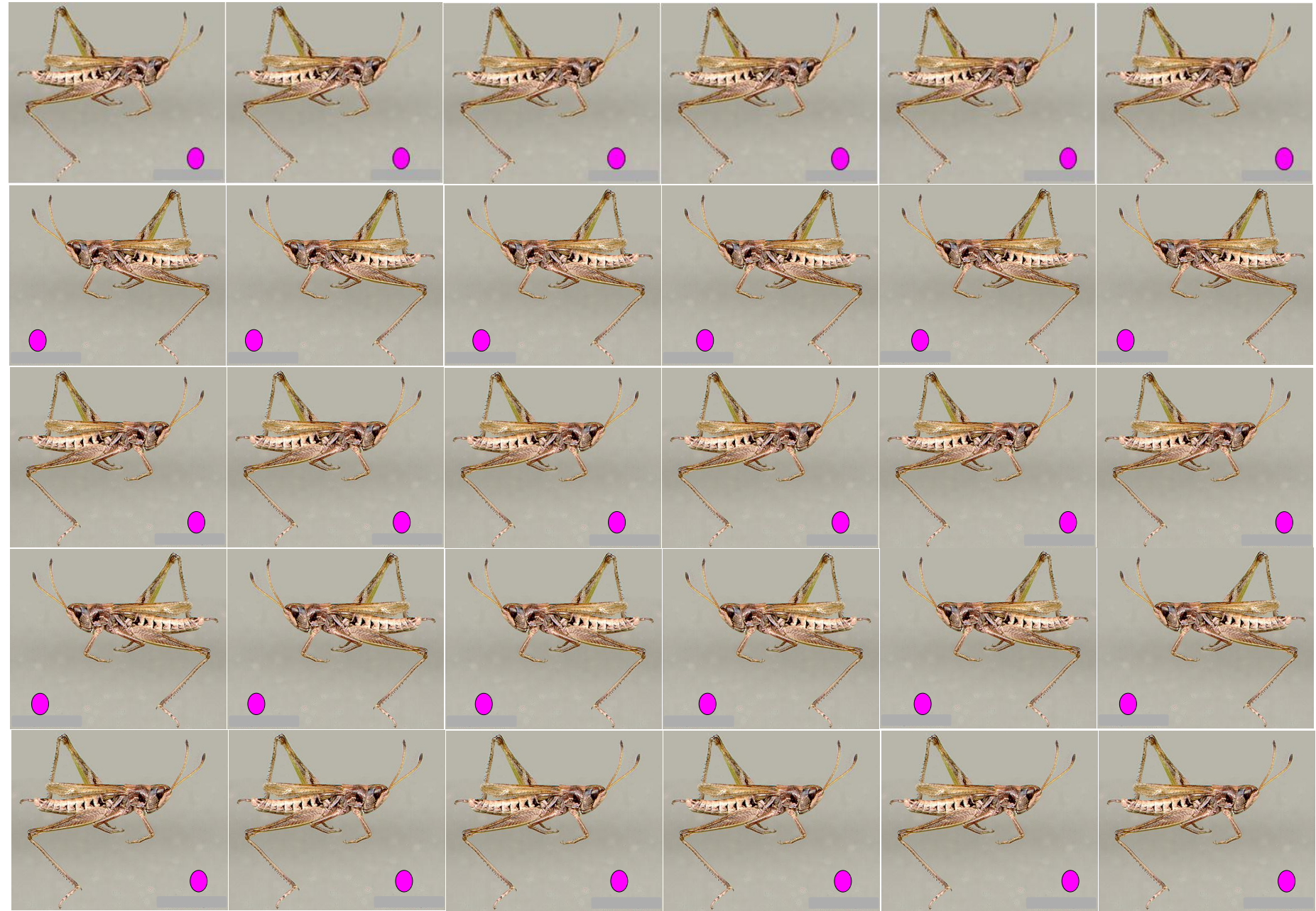
Image: *Melanoplus dodgei*

Photo by: Don van Horn

Images of *Melanoplus* cerci available at

[http://www.ndsu.nodak.edu/ndmoths/hopper/orthoptera\\_index.htm](http://www.ndsu.nodak.edu/ndmoths/hopper/orthoptera_index.htm)

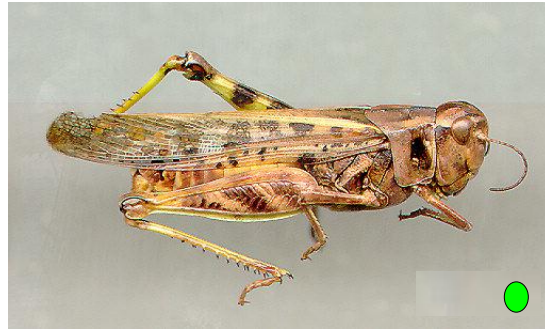
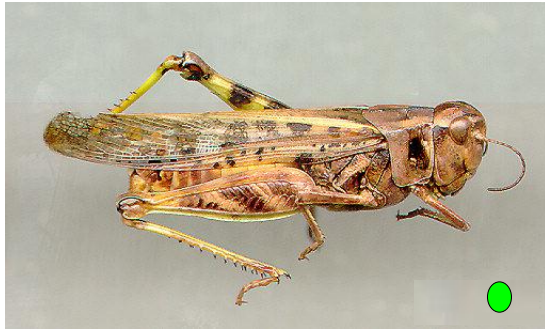
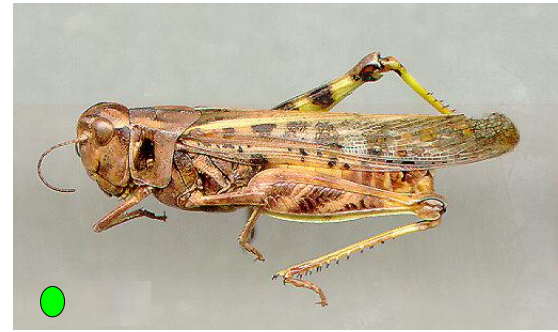
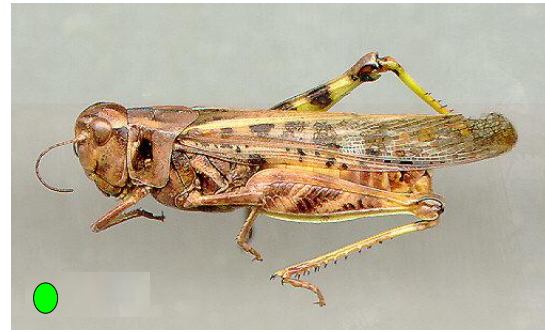
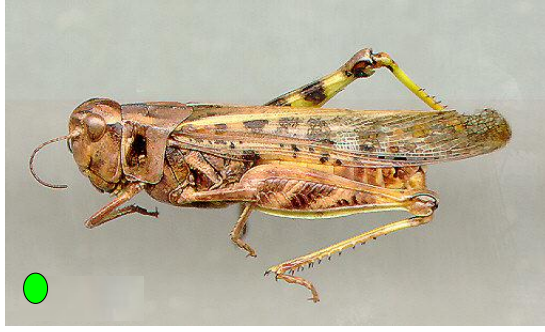
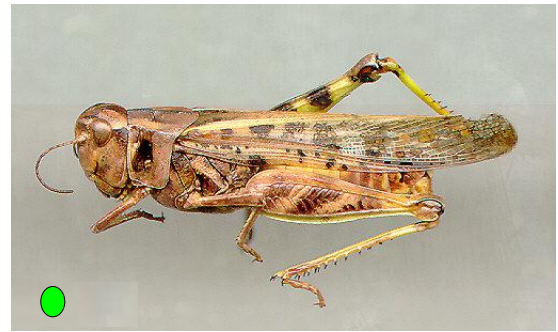
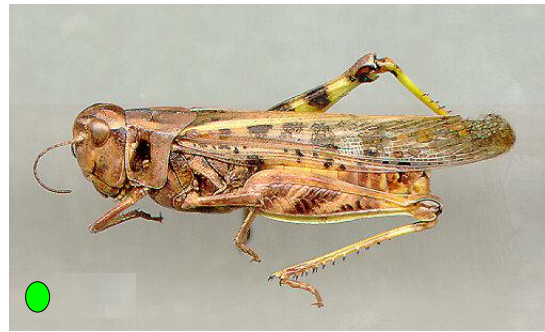
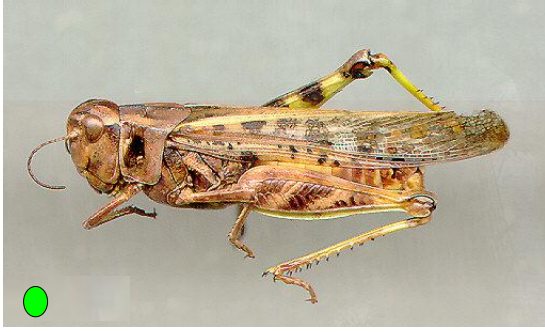
*Aeropedellus clavatus*



*Chloealtis abdominalis*

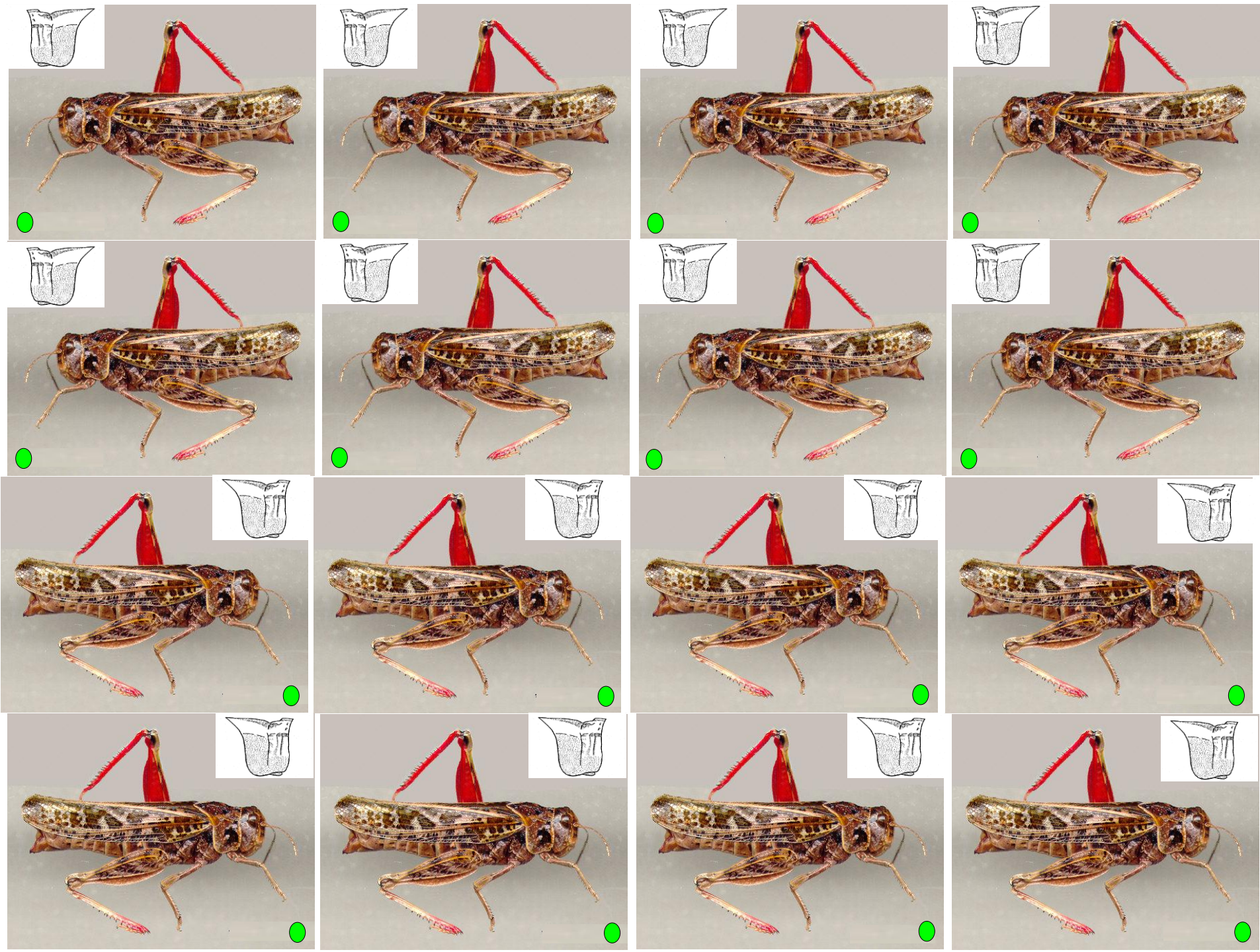


*Camnula pellucida*

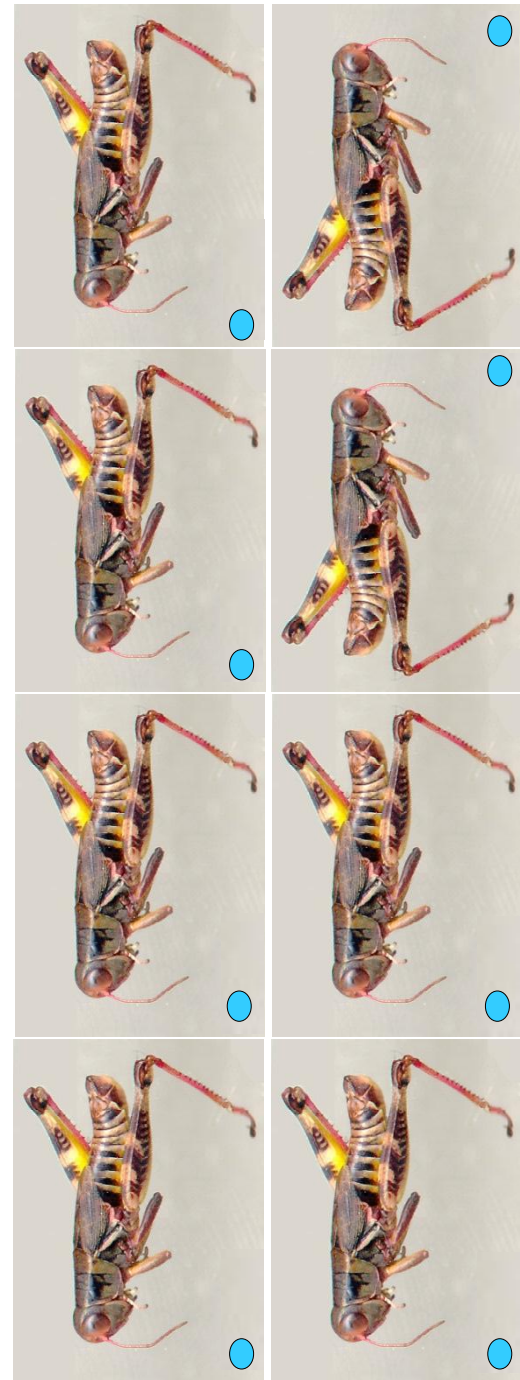
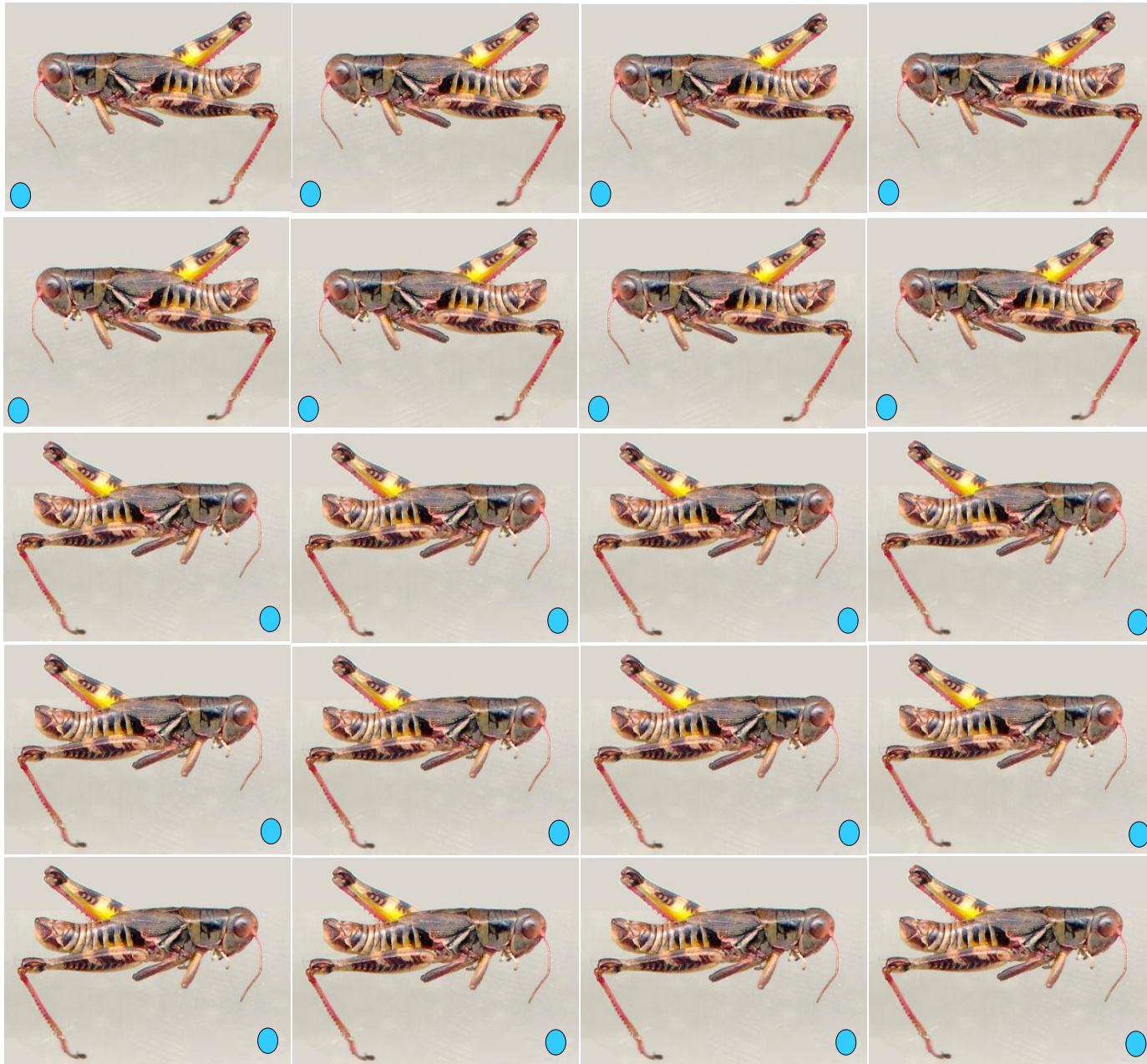


*Circotettix rabula*





*Melanoplus dawsoni*











*Melanoplus packardii*



