

C1, Subalpine Grasshopper Collection (3048m or 10,000ft)

- **2006**
- *Chloealtis abdominalis*- 8 images/page. Print 1 sheet.
- *Arphia conspersa*- 20 images/page. Print 1 sheet.
- *Camnula pellucida* 12 images/page. Print 3 sheets.
- *Circotettix rubula*- 8 images/ page. Print 1 sheet.
- *Trachyrhachys kiowa*- 3 images/page. Print 1 sheet.
- *Melanoplus dodgei*- 16 images/page. Print 3 sheet. Cercus needed, print page 9 behind 8.
- *Melanoplus fasciatus*- 20 images/page. Print 1 sheet. Cercus needed, print page 11 behind 10.

Grasshopper Photos by Gerald M. Fauske

http://www.ndsu.nodak.edu/ndmoths/hopper/orthoptera_index.htm

Image: *Melanoplus dodgei*

Photo by: Don van Horn

Image: *Melanoplus fasciatus*

Photo by: Mike Jones

<http://bugguide.net/node/view/331463>

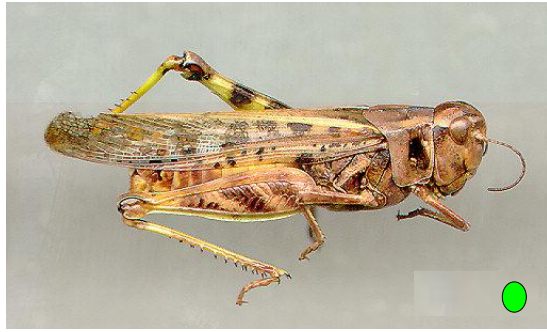
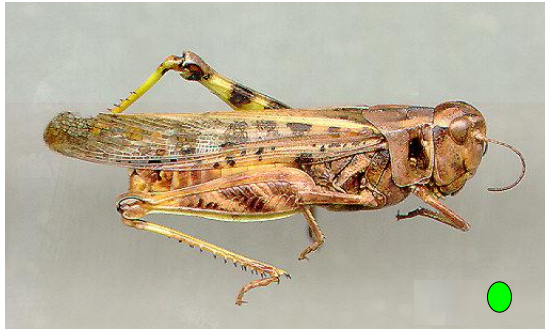
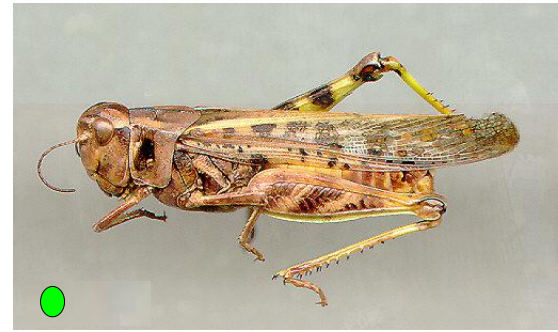
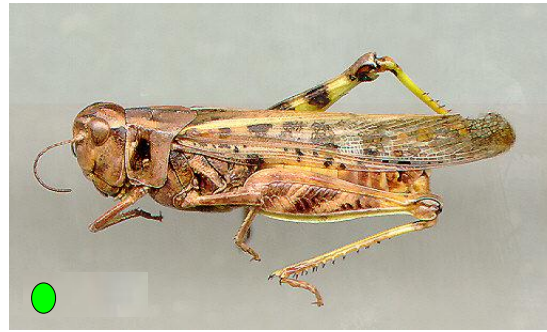
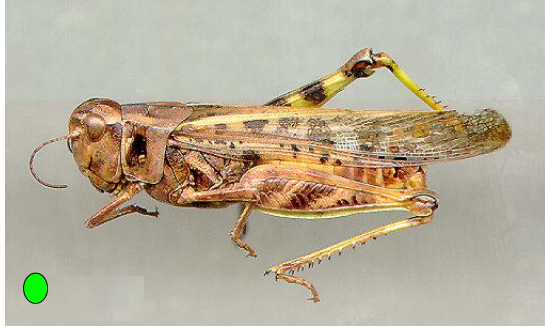
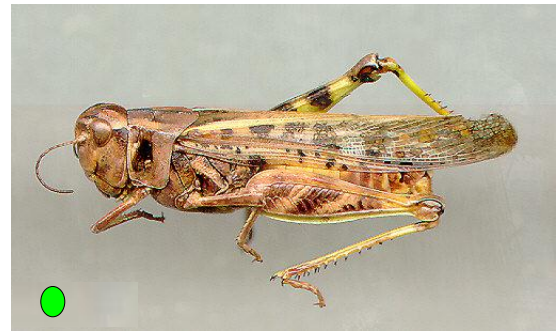
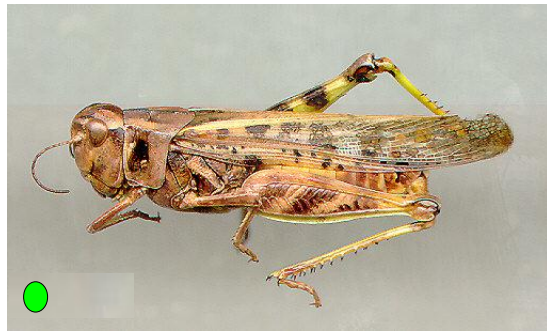
Images of *Melanoplus cerci* available at

http://www.ndsu.nodak.edu/ndmoths/hopper/orthoptera_index.htm

Chloealtis abdominalis



Camnula pellucida



Circotettix rabula



Trachyrachys kiowa





Melanoplus fasciatus



